

INVEST HEALTH

Strategies for Healthier Cities

A Project of the *Robert Wood Johnson Foundation*
and *Reinvestment Fund*



Invest Health Inaugural National Convening

June 7-10, 2016

Introduction to Invest Health

1. **About Invest Health**
2. Program overview and partners
3. Customer service
4. Participation expectations
5. Convening agenda overview

About Invest Health

Invest Health is a new initiative of Reinvestment Fund and the Robert Wood Johnson Foundation (RWJF) that seeks to **fundamentally change** the way cities improve opportunities for their citizens to live healthy lives.



REINVESTMENT
FUND



Robert Wood Johnson
Foundation

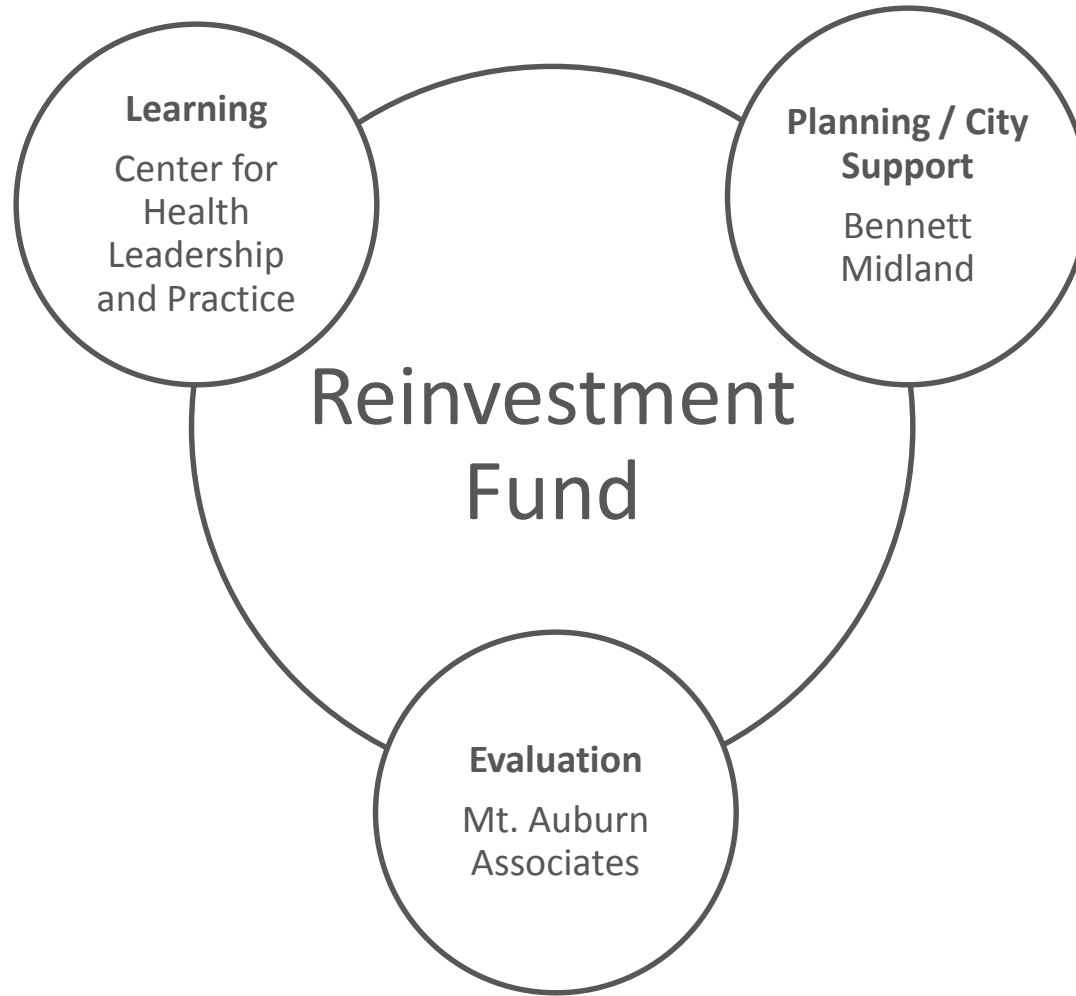
About Invest Health: At the end of 18 months...

- **Collaborative infrastructure:** Invest Health team and broader “home team” forge strong, cross-sector collaboration aligned around a vision of better health
- **Built environment projects:** Invest Health team’s engagement of community, focus on equity, and use of data lead to a long-term pipeline of and significant progress on built environment projects intentionally incorporating elements that will improve resident health and well-being
- **Community development finance system:** Invest Health team identifies new streams of capital and leverages the funding to finance investment opportunities identified through the program
- **Enabling environment:** Through work on specific built environment projects, Invest Health team identifies and acts on system strategies aimed at creating a built environment supporting more equitable and healthier communities
- **Learning network:** 50 Invest Health teams/cities build strong relationships

Introduction to Invest Health

1. About Invest Health
2. **Program overview and partners**
3. Customer service priority
4. Participation expectations
5. Convening agenda overview

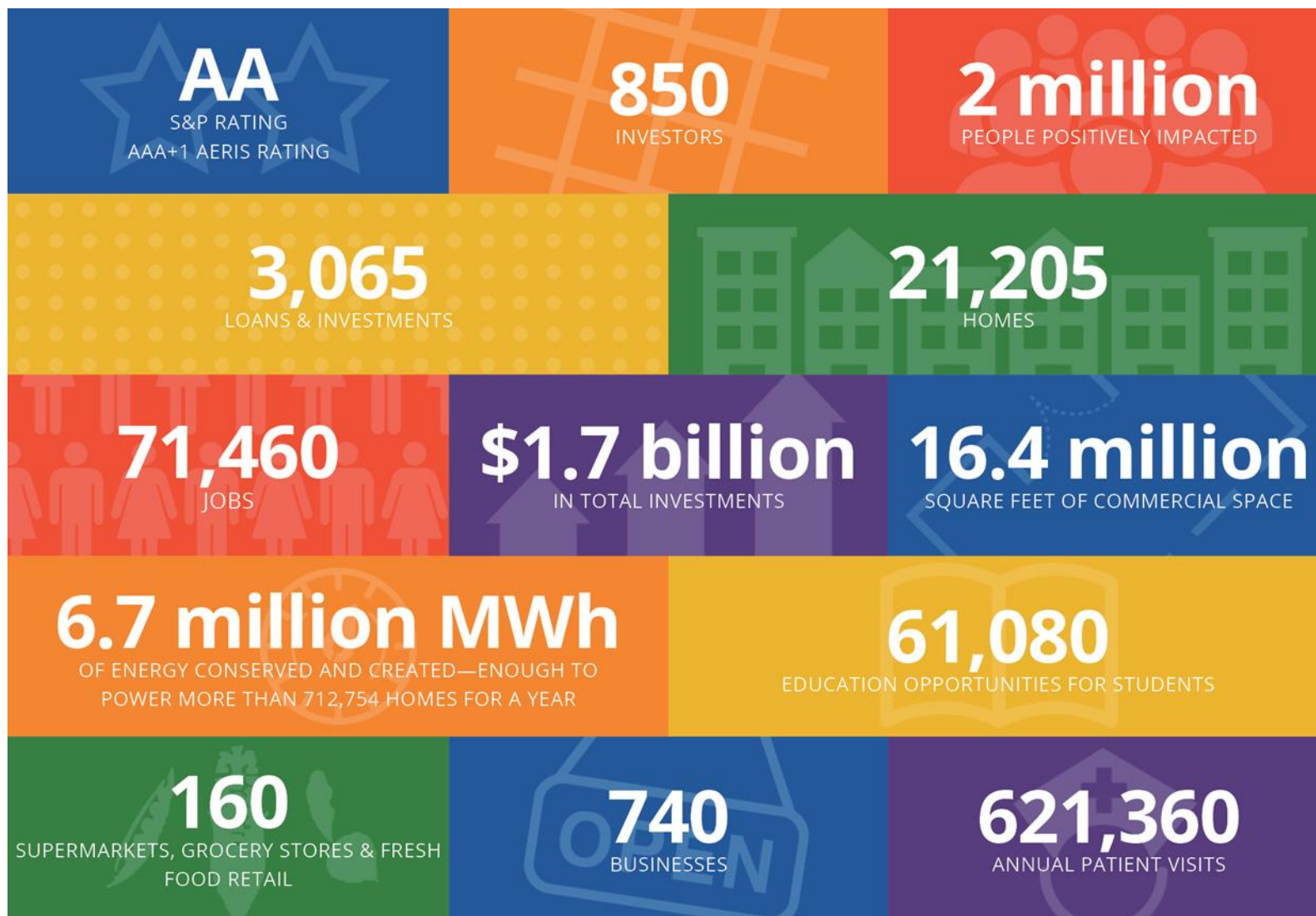
Invest Health: Program Partners



About Reinvestment Fund

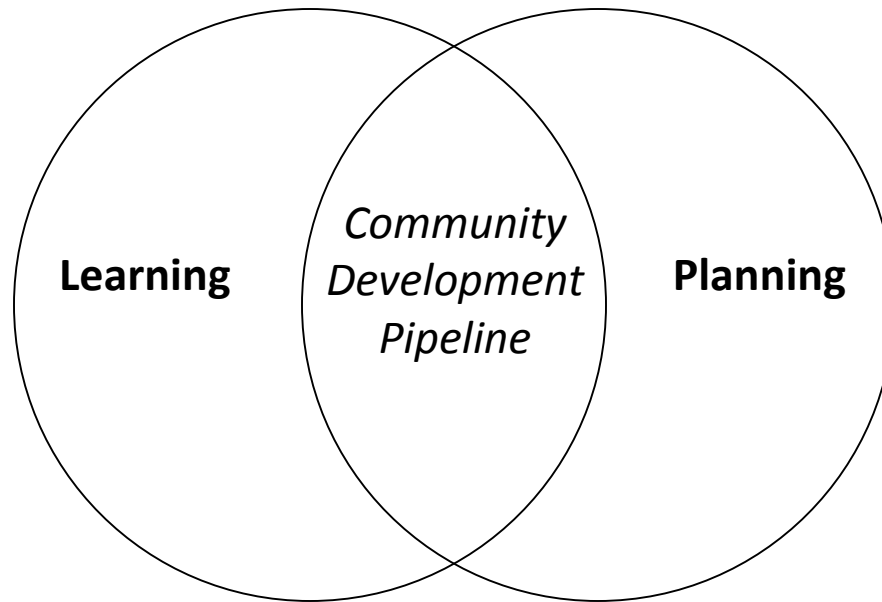
- Our mission is to build wealth and opportunity for low-wealth people and places through the promotion of socially and environmentally responsible development.
- Since 1985, Reinvestment Fund has made **\$1.7 billion** in cumulative investments and loans.
- We are supported by over **850 investors** that include individuals, foundations, religious institutions, financial institutions, civic organizations and government.

About Reinvestment Fund: Our Impact



Invest Health: Program Overview

- Invest Health will proceed on two tracks: learning and planning
- In combination, these tracks will support Invest Health teams in building community development pipelines focused on mitigating the social determinants of health



Learning Track: Center for Health Leadership and Practice

CHLP is distinguished by:

- A history of delivering the only multi-sector, practice-based program with national reach and evidence-based effectiveness at an individual, team, and community health impact level
- Over 400+ fellows from 100+ teams in more than 36 states
- A broadly diverse mix of more than 183 national, state, and local multi-sector initiatives

“We are committed to advancing health by increasing the capacity of leaders to transcend boundaries, work collaboratively, and transform their communities.”

Invest Health: Learning Track

Convenings



National (4)



Pods (2 to 3)

Skills Building



Webinars



Tools & Resources

Learning Support



Web-based Learning
Groups



Discussion Forum

Communications



Web Portal



Weekly Newsletter

Planning Track: Bennett Midland City Support Team

Bennett Midland is a strategy partner for the civic sector

Trusted partners

Work with city governments, non-profits and foundations, to help them solve big problems.



Solutions and impact

Design solutions that make a difference for our partners and the people they serve.



Rigorous execution

Ensure a clear path to implementation, because a solution without a plan is just an idea.



Invest Health: Planning Track



- Provide individual point of contact for each city
- Refine vision and build a strong case for investment
- Two check-in calls with every city
- Weekly office hours
- Feedback on city work products
- Respond to your inquiries and concerns
- Group workshops and network support

Invest Health: Planning Track



- Individual point of contact for each city
- Check-ins, periodically and as needed, through various channels (phone calls, emails, progress reports, etc.) to help cities think through the best opportunities for change and investment and the steps required to achieve them
- Connect cities with tailored support network resources (subject matter experts in the social determinants of health, community engagement, peer cities)
- Provide feedback on city work products and business plans
- Support networking—with one another, with CFDIs, and with other potential investors
- Design and distribute monthly progress surveys to cities; analyze feedback and trends to inform responsive content

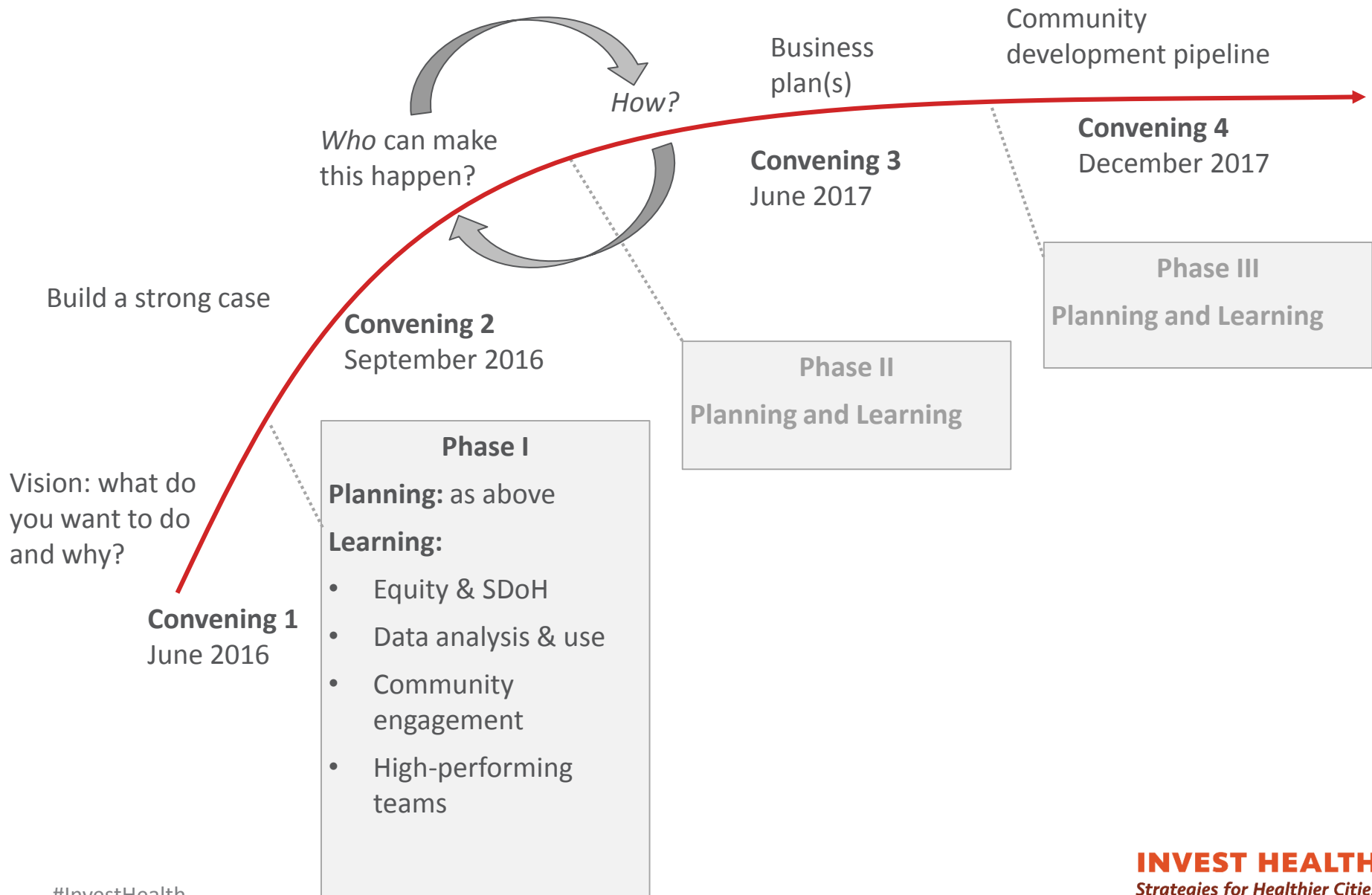
Invest Health: Competency Model



Invest Health: Competency Model

Equity & Social Determ. of Health	Community Engagement	Community Systems	Power and Influence
Understands causes and impact of disparities and inequities related to health and well-being	Leverages community assets and resources; collaborates with diverse partners	Understands complex community systems, including relationships, boundaries, and sources of interdependence	Understands how to leverage networks and sources of power; delivers influential messages
Cross-cutting skills			
Data Analysis and Use: Identifies and uses credible sources of data for planning, learning, and tracking progress			
Financial Capital: Identifies and harnesses new sources of capital for built environment initiatives that mitigate the social determinants of health			
High Performing Teams: Creates and sustains a high performing team that successfully plans and implements initiatives within a community			

Invest Health: Program Phases



Evaluation: Mt. Auburn

- **Lead:**
 - Mt. Auburn Associates – Expertise in the evaluation of complex, multi-site initiatives; field expertise in community development, economic development and workforce development
- **Partners:**
 - Fourth Quadrant Partners – Expertise in emergent learning
 - Karl Seidman – Senior Lecturer at MIT's Department of Urban Studies and Planning; expertise in community development finance
 - Keri-Nicole Dillman – Expertise in community development and evaluation methods

Evaluation: Mt. Auburn

- **Evaluation is focused on learning:**
 - The field
 - The team
 - The sites
- **Mixed qualitative and quantitative methods, likely to include:**
 - Baseline and final survey of team members
 - Learning focused case studies with site visits of some cities
 - Periodic interviews
 - Observations of convenings

Introduction to Invest Health

1. About Invest Health
2. Program overview and partners
3. **Customer service priority**
4. Participation expectations
5. Convening agenda overview

Invest Health: Customer Service Priority

- **Respect for your time**
 - Intensive convening calendars to maximize value
 - Weekly newsletters with updates, deadlines, timely information
 - All program information posted to online learning platform
- **Assistance just an email or phone call away**
 - info@investhealth.org
 - City Support Team representatives
 - Corporate Traveler
- **Responsive, adaptive program design**
 - Feedback during and at close of convening will inform program design
 - Surveys and information-gathering by evaluation partner over course of program

Invest Health: Customer Service at Convening

- **Staff and volunteers**
 - Look for name tag ribbons
 - DoubleTree meeting concierge Juli Adams
 - Information table in Overture Room
- **Reference Materials**
 - Team-specific Convening Calendar – **where to go, when**
 - Tabletop Folders with:
 - Agenda
 - Bios for speakers, guests, and program staff
 - Showcase City profiles
 - PolicyMap and County Health Rankings & Roadmaps information
 - City Team directory*
 - Restroom locations
 - City Snapshot binders
 - Presentations will be posted on online learning platform

Introduction to Invest Health

1. About Invest Health
2. Program overview and partners
3. Customer service priority
- 4. Participation expectations**
5. Convening agenda overview

Invest Health: Expectations

- **Travel Team and Home Team**
 - Consistent Travel Team composition, with consistent presence at convenings
 - Work at home shared with a larger Home Team
- **Investing in the program**
 - Fully present at convenings (minimize screen time/multi-tasking)
 - Take advantage of the opportunity to meet new people, share experiences and perspectives, and take risks
 - A la carte menu of learning options – build your own feast
 - Maximize time with City Support Team liaison by doing prep work

Introduction to Invest Health

1. About Invest Health
2. Program partners and overview
3. Customer service
4. Participation expectations
5. **Convening agenda overview**

June Convening: Intentions / Goals

- **Inspiration:** what success looks like
- **Equity:** overall frame for the work
- **The path ahead:** program aspirations, learning progression, and program expectations
- **Learning Community and team formation**
- **Team / City Support Team connections**
- **Core Content:**
 - Use of data, key data sources, and related tools
 - Social Determinants of Health
 - Community Development

June Convening: Wednesday, June 8th

- Welcome from Don Hinkle-Brown (plenary)
- Opening keynote address by Dr. Risa Lavizzo-Mourey, President and CEO, RWJF (plenary)
- Starting the day (plenary)
- Introduction to Invest Health (plenary)
- Learning mindset (plenary)
- **Break**
- Team capacity building and effectiveness (plenary and breakout)
- **Lunch**
- Keynote address on equity by Glenn Harris, Center for Social Inclusion (plenary)
- **Break**
- Team-based learning on equity and disparity (breakout)
- Closing to the day (plenary)

June Convening: Thursday, June 9th

- Welcome to the day
- Keynote address by and Q&A with Annie Donovan, Director, CDFI Fund (plenary)
- Introduction to Phase I of program (plenary)
- **Break**
- Phase I activity (breakout)
- **Lunch**
- Panel discussion with Showcase Cities (plenary)
- Workshops (breakout):
 - PolicyMap
 - County Health Rankings & Roadmaps
 - City Support / Team sessions
- Closing to the day (plenary)
- Joint Invest Health and Reinvestment Fund investor celebration at Barnes Foundation

June Convening: Friday, June 10th

- Welcome to the day
- Network and system mapping (plenary and breakout)
- Next steps: the work ahead in Phase I (plenary and breakout)
- **Break**
- Closing remarks (plenary)